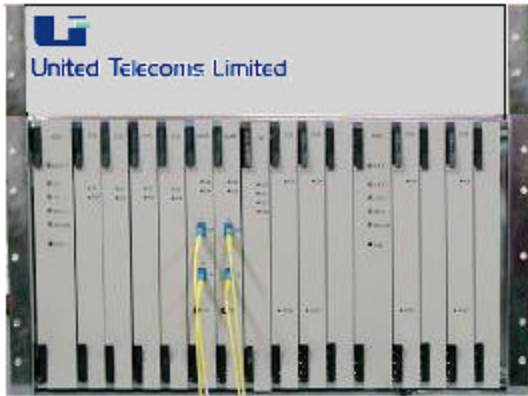


STM 1 – Stand alone



The UTL STM1 is Telecommunication backbone equipment carrying upto 155Mbps data on a single fiber. It is typically deployed between two stations having transport capability of applications such as Synchronous Transport Services (SDH/SONET), LAN Services and Voice, Video Services. It can be configured as short haul or long haul based on the customer requirement .

The system supports standard protocols like TCP/IP, SNMP for network management. Performance, configuration and fault management is done by means of a central Network Management station

Features

- As per ITU –T G783 & G707 stds
- Optical interface : Short haul / Long Haul.
- Interfaces : E1/ E3 /DS3 & 10/100mbps FE
- Network Interfaces : Electrical & Optical
- Terminal mux configurable as ADM
- Built in VC-12, VC-3 & VC-4 X connections.
- Fully redundant system
- Protection for Fibre
- Centralized SNMP - NMS for FCAPS management.
- Order wire for system maintenance.
- Online software upgrade utility.
- Extracted F1,F2 & DCC for external interface

Power

- -48V DC.

Physical Size : 19” std Subrack

STM1 Interfaces

- E1 interface Card
 - 21 E1 ports
 - Compliant to ITU –T G703
- E3/ds3 Interface card
 - 1 E3 port
 - Field configurable as E3/DS3
- Ethernet Interface card
 - 10/100 base Ports
 - Optional 10/100 FDDI ports

Other Interfaces

- Serial Management Port.
- JTAG/BDM Port.
- LED status indication

Clock options

- Internal
- External G703
- Recovered Clock from Aggregate
- Recovered clock from Tributaries
- External 2 MHZ

Order wire

- E1
- E2

Sub System Cards

- Aggregate card (STM1/4 optical transceivers).
- Cross Connect Card.
- E1 mapper card.
- E3 mapper card.
- Ethernet mapper card.
- Orderwire Card.
- Clock Card.
- Control Card with network processor

Protocol

- Full featured TCP/IP stack
- SNMP Version 2
- AMX RTOS
- Upgrade utility

Management Console

- Supports Configuration, Performance & Fault statistics
- **Runs on Windows NT**