



SHDSL MODEM (2Mbps)



Introduction

SHDSL modem caters for high speed, symmetric Digital Subscriber Line (DSL) delivery over a single copper pair at rates between 64kbps and 2048Kbps.

SHDSL provides superior performance with TCPAM coding against traditional 2B1Q HDSL modem. System immune to noises and address rate/range adaptability spectral compatibility impairment tolerance

High-speed symmetric deployment for business-based applications such as multiple voice line delivery, Internet access and remote LAN access. Single pair / Two pair transmission system working on normal telephone line. Leased line modem application with E1(G703) and fractional E1s (NX64 V.35)

System Features

- Easy management with LCD and keypad
- Remote monitoring with Network Management System interface(NMS)
- Proxy for HP Open View open NMS
- Field upgradeable plug and Play Interfaces
- Supports Direct 10base-T Ethernet interface avoids expensive Telecom interface card in router
- It provides the bi-directional transmission of E1 signal between the COT (Central Office Terminal) and the RT (Remote Terminal) in the LPT network.
- Supports Voice ,Data & Internet
- Economical

- No jumper setting is required. The same modem can be configured for Central or Remote using menu settings
- DTE (V.35) and E1 (G.703) port in the same box which not only saves Inventory management problem but also helps in unique applications:
- User defined Time slot mapping with support for PCM30, PCM31 and unframed data formats. Support auto data rates adaptation between 64K and 2048K
- Easily configuration from front panel switches
- Remote configuration and monitoring
- Local/ Remote Analog/Digital Loop back and Built in BERT COMPLING TO ITU T.501/V.52 ITU-T recommendations
- Can also work as a interface converter
- Inbuilt Line and Surge protector
- Distance coverage up to 5.8 Kms over 4-wire 0.5mm copper (Twisted copper) and 8 KMs and above over 2-wire 0.5mm copper loop

Optional Features

- Depending on the requirement the system can be a G703 – G703 system or G703 – V.35 system.
- Modems can be connected to a computer through RS 232 port
- NX64 interface for easy up gradation with investment protection.
- 10BT / 4 PORT Switch



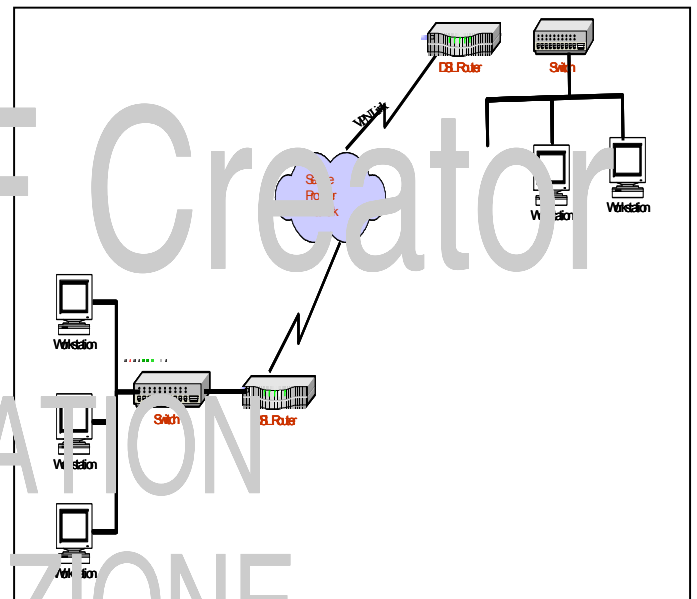
Applications

Comparatively low cost product makes it an ideal solution for business applications that require upstream bandwidth:

- Hosting web sites, application servers
- Interconnect remote offices with VPN (Virtual Private Networks)
- Allows greater numbers of remote works to VPN connect

Compared to ADSL

- VoIP Networks
- SOHO application with switch



Jaws PDF Creator
EVALUATION
VALUTAZIONE
EVALUATION
EVALUACIÓN
EVALUATION



Power supply :

- AC:185VAC - 265VAC / 50 or 60Hz
- DC: 36 - 72 VDC

Display

SHDSL LINES: Line A (SHDSL LOS)
 Line B (SHDSL LOS)

E1 Port : E1 LOS
 BER : BER >10E-3
 STATUS : AIS (Alarm Indication Signal)
 : RAS (Remote Alarm Signal)

Loop Back ON : LB

LED Indicators

ON: LED (GREEN) will be glowing.
GSF: General alarm indicator signal
LINE-A: input loss indicator
LINE-B: input loss indicator
WD: Software Watch dog
AIS: Alarm indication signal.
E1: 2Mbps input loss indicator
RAS: Remote alarm switch
LB: Loop test condition indicator

Ordering information:

UDSL36 -P X -IY

X	Power supply
48 V	DC Power module(36-72V)
230V	AC power module(180-265V)
Y	Interface
G703	G703 E1 interface
V35	V.35 Interface
10BT	10 base-T Ethernet Interface
V35N64	V.35 NX64 Kbps
FLEX	G703&V.35

Technical Specifications

Coding - Trellis coded -PAM

ITU-T 992.1

ITU-T G703

ITU-T G704

ITU-T V.35

SHDSL line interface:

Compliance : ITU-T G.SHDSL
 Signal Format : Dual Duplex, 16 TC-PAM
 Line bit rate : 2056 Kbps
 Line impedance: 135 ohms balanced
 Line type : Unloaded Twisted pair
 Return loss : 16dB minimum,
 25Khz - 300Khz @ 135ohms
 Range : 3.8 Km for 26. W5 (0.4mm) 14.7

Connector : RJ 45

E1 Interface .

Standards : ITU Rec G703, G704.
 Data rate : 2.048 Mbps
 Line Code : HDB3
 Line Impedance: 120 Ohm balanced
 Transmit Levels: Balanced ±3V ±10%
 Connector : optional RJ-45 Female Connector / BNC

V.35 Interface (N*64)

Data rate : 64 - 2048 Kbps
 Interfaces : V.35, V.36/RS-449, RS-530, and X.21

Ethernet Interface (10 BT)

Data rate : 10Mbps Burst

Supervisory

Interface : RS232
 Connector : 9 Pin D Type Connector.

Operating Temperature :

- 0 to 55 °C
- Humidity: Up to 90%

Physical dimensions

- L* W*H 188 * 248 * 50 (all in mm)